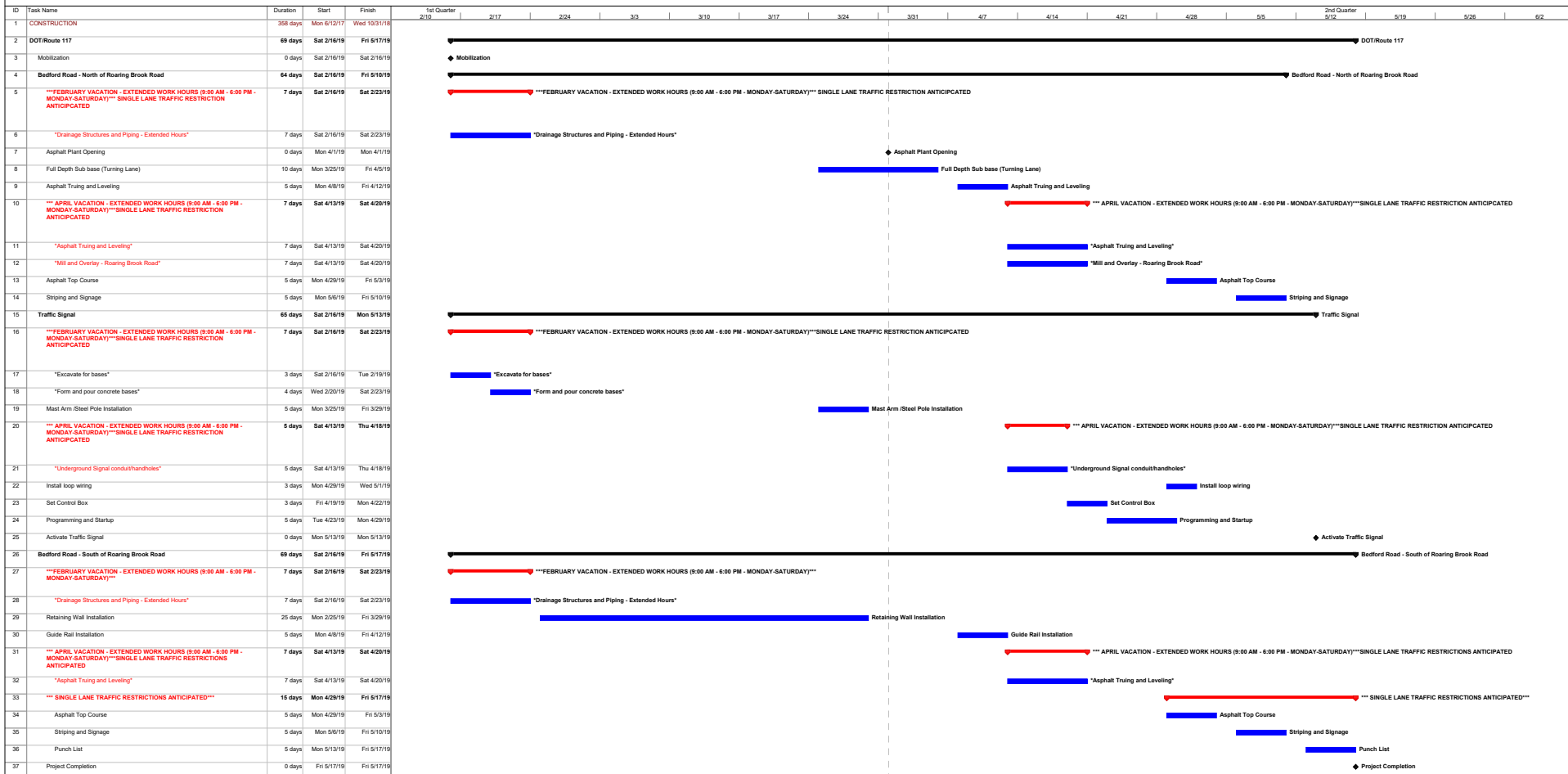




RECEIVED
By Sabrina D. Charney Hull at 9:09 pm, Jan 28, 2019



Project: Chappaqua Crossing, Chappaqua, NY Pin: AW08.02.700
 Legend: Task (blue bar), Milestone (diamond), Project Summary (arrow), Rolled Up Task (grey bar), Rolled Up Progress (blue bar), External Milestone (grey diamond), Inactive Milestone (white diamond), Manual Task (green bar), Manual Summary Rollup (green bar), Start-only (arrow), Deadline (vertical line), Split (dotted line), Summary (dotted line), Group By Summary (arrow), Rolled Up-Milestone (grey diamond), External Tasks (grey bar), Inactive Task (white diamond), Duration-only (grey bar), Manual Summary (green bar), Finish-only (arrow), Progress (arrow)

- Traffic Sequencing Narrative:**
- 1) Commencing Saturday, February 16th through Saturday, February 23, drainage work and concrete light pole base installation will take place. Extended work hours will be permitted during this timeframe (9:00 am until 6:00 pm).
 - 2) Commencing Saturday, April 13th through Saturday, April 20th, Truing and Leveling on RT 117 and Mill/Overlay on Roaring Brook Road are expected to take place. Extended work hours will be permitted during this timeframe (9:00 am until 6:00 pm).
 - 3) In accordance with the Maser drawings P11-14 (Pin: AW08.02.700) Montesano will conduct lane closures as shown to perform installation of the drainage systems and pavement.
 Projected lane restriction (to one lane) durations for each activity include:
 - Drainage and light pole bases: 1 week
 - Truing and Leveling: 2 weeks
 - Asphalt Top Course: 1 to 2 weeks
 - Striping: 1 week
 - 4) During the installation of the retaining wall, two way traffic will be maintained with a minimum of 10' wide travel lanes in both directions.
 - 5) All traffic control, flagging, and signage will be conducted/ installed in accordance with Maser drawing P14 (Pin: AW08.02.700). Two to four certified flaggers will be used at all times. Montesano will adjust as needed to changing conditions.
 - 6) At the completion of each work day the intersection will be returned to the full Maser MPT Plan including the southbound right turn lane.
 - 7) Work on the north side of Roaring Brook Road will require the temporary closure of the southbound right turn lane.
 - 8) The southbound turn lane will remain open when work is occurring South of Roaring Brook Road.
 - 9) The above schedule may be impacted by adverse weather conditions.